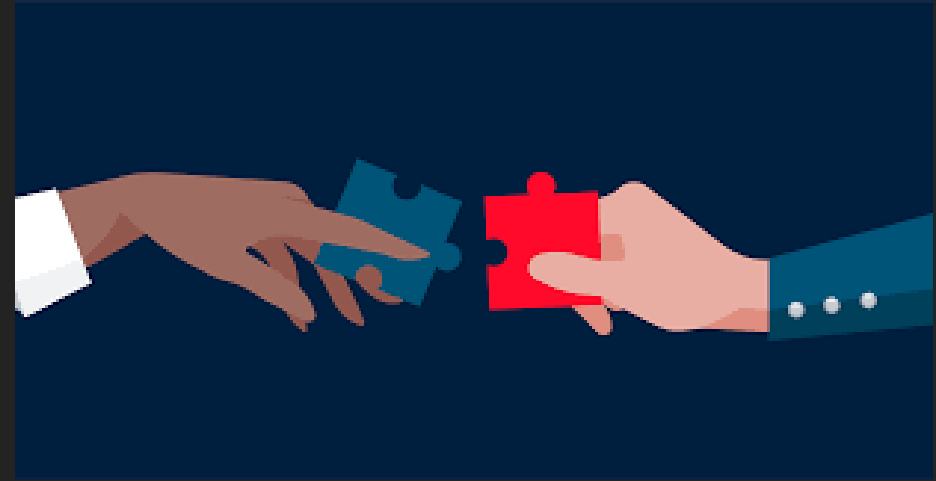


Building cultural capacity in broadcasting with Partnership Editors

A concept created by Aotearoa Media Collective and partners



The river of a Māori journalist runs deep

He wai māori



Kanohi kitea - Known, trusted in te ao Māori

Mōhio tanga – skilled, balanced, yet seeking what is not always seen

Whanaungatanga – maintain connections, navigate connections

Tirohanga Māori – Māori viewpoint, Māori 'feel'

Te reo Māori – and/or ability to translate for non speakers



HE IA WAI KA RERE KI
HEA, KI HEA

waterways that flow to
many places

Each cutting their own
path

Feeding the
'mainstream'

Broad and rich

What is a Partnership Editor?

Builds relationships with mana whenua and Māori organisations

Helps staff understand te reo, tikanga and kawa

Provides ideas to broaden out stories

Identifies how the organisation can grow diversity

Develops a diversity plan for your organisation

Provides cultural safety in the workplace

How will a Partnership Editor fit in?

Step One

- We will identify the cultural strengths and weaknesses of your organisations through kōrero with your leadership and some staff. Not every newsroom requires the same support.

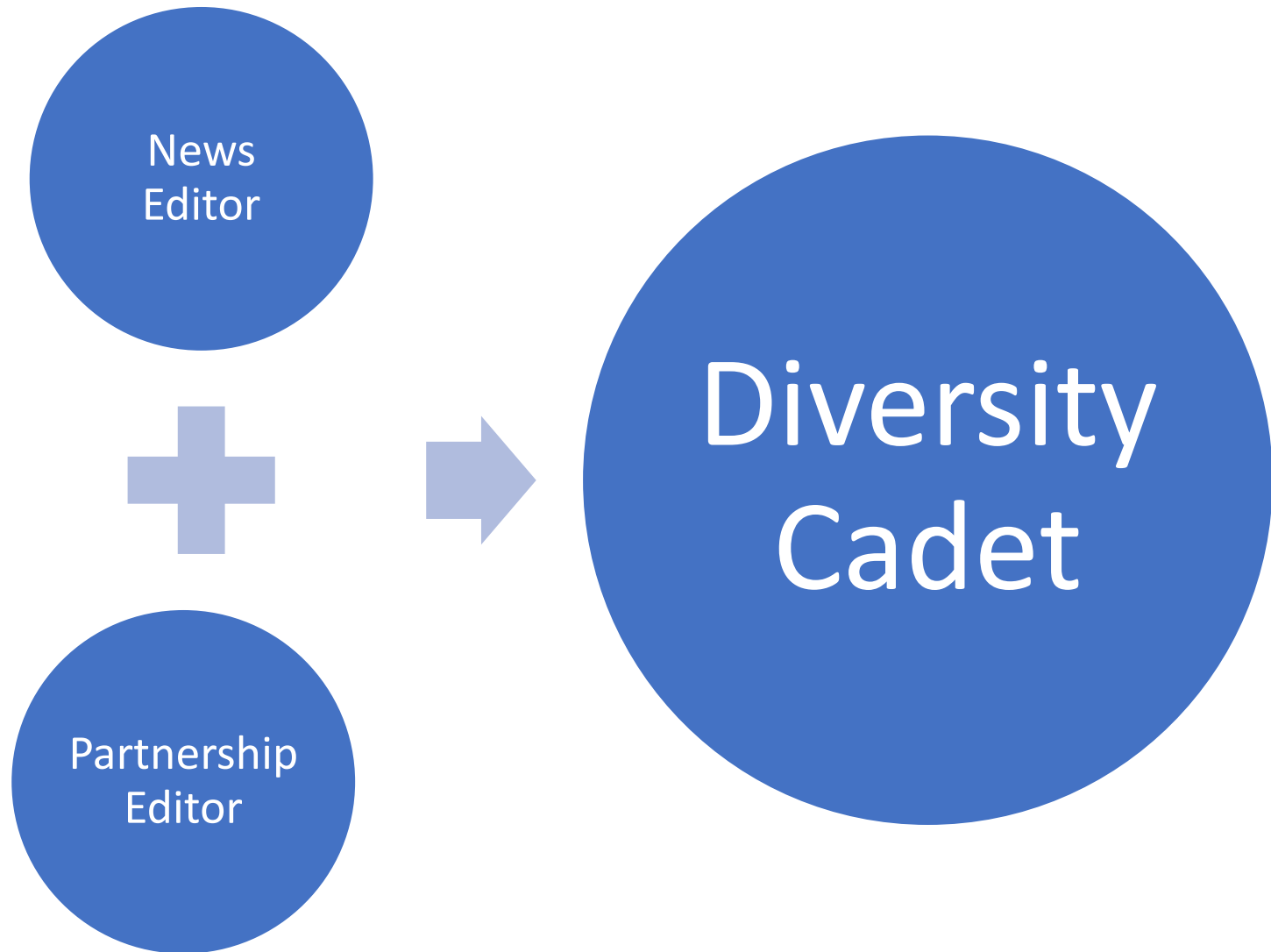
Step Two

- We will work with you to create a unique job description for the Partnership Editor your newsroom needs eg your organisation may require someone who has experience in television or radio or you may want someone who can teach te reo.

Step Three

- Once you have decided who your Partnership Editor is, they will participate in an intense journalism training programme with industry experts. Your organisation will be asked to provide ideas on what is important to your newsroom.

THEN WHAT?



- Apply to NZOA for a Partnership Editor
- Transition the editorial team eg. Partnership and News Editors
- Identify strengths and weaknesses
- Work with AMC's cultural monitors to identify diversity training options for your organisation
- Deliver training to your organisation
- Report back to NZ on Air
- Apply to NZOA for a diversity cadet/internship

OUR TEAM



STACEY MORRISON – NGĀI TAHU, TE ARAWA

- Partnership Manager



MIHINGARANGI FORBES – NGĀTI PĀOA, MANIAPOTO

- Media Partnerships



SCOTT CAMPBELL – TE ARAWA, NGĀTI PĪKIAO

- Media Partnerships



ANNABELLE LEE-MATHER – NGĀTI TAHU, KAHUNGUNU

- Media Partnerships



SCOTTY MORRISON – TE ARAWA

- Partherships Trainer



ANI-PIKI TUARI – NGĀTI PŌROU

- Partnerships Trainer